



Providers Portal

Greater efficiency to
interact with providers.

Offer users a secure and efficient data and document
exchange with providers.

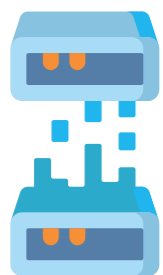
Optimize the corporate time spent on answering queries,
facilitate communications, and strengthen client-provider
bonds.





Providers Portal

This module provides the provider with significant information regarding the status of **Commercial Documents** and payments made, while also offering the possibility of issuing slips in accordance with regulations applicable in each country.



Easy interaction with provider companies.

1



View of K2B data in real time.

2



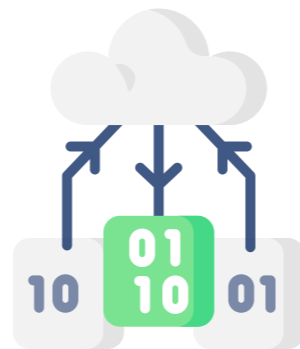
Paperless documents.

3



Reduced administrative work with automated management.

5



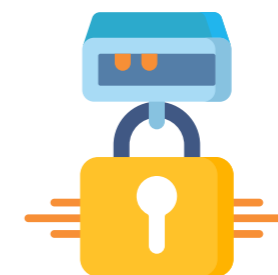
Centralized documents: purchase orders, commercial documents, account statements, slips.

4



Integration with other internal and external systems.

6



User access and password management.

7

What the K2B Providers Portal has to offer

✔ Purchase Orders

The provider may view the detail of purchase orders, by applying different search filters, including issue date ranges, purchase order number, status, or products included on the order.

It is possible to export the data viewed in both *pdf* and worksheet formats.

Possibility of defining, through parameterization, the information to be deployed in the provider's query. Additionally, the events viewed will be those with an impact on the provider's account statement.

✔ Commercial Documents Settled / Paid

The provider may view payments received, as well as the documents involved. This query is possibly through a series of filters that facilitate data search based on payment date ranges and document number. It is possible to export the data viewed in both pdf and worksheet formats.

The provider may access the *pdf* document corresponding to the withholding certificate associated with each commercial document.

Possibility of defining, through parameterization, the information to be deployed in the provider's query.

✔ Commercial Documents pending Settlement / Payment

The provider may query all invoices pending payment. Users querying this information have a series of filters to facilitate the search for information, with queries by date range or commercial document number.

Possibility of configuring the transaction types to be shown, and also the chance to export them to excel or *pdf*.

Commercial documents are grouped into different statuses and later updated as they advance in the organization's operational flow.

As an aid to providers, means of communication are included at the footer in each case.

✔ Account Statement

Possibility to query the provider's account statement filtering by date ranges to obtain it in *pdf* or *excel* formats.

Also the chance to obtain commercial documents submitted by the provider, and payments made.

For each payment, the commercial documents included are itemized.

✔ Slips

Possibility to access all slips issued in a given period, including documents settled and documents generated at the closing of the corresponding fiscal year.

Slips may be queried filtering by date range or document number.

The provider may print slips individually or all those shown on the grid according to the filters applied.

✔ Integration with other systems

Possibility for integration with other systems, with information obtained through the consumption of web-services and the inclusion of components adapted to the client's needs. For instance, integration with the State's *National Providers System (RUPE)* for the case of Uruguay, an external system where the government's providers must be duly registered. The Portal offers interoperability with that system for security validation and to allow access.

Providers Portal

To learn more about the **Providers Portal**, request further information by writing to comunidad@k2b.com

K2B is the Latin America **ERP** meant to evolve along with your business.

